



BEN'S KNOB

See Reverse Side
for Floor Plans

- 1½ story on an unfinished basement with 3 bedrooms/2 bathrooms and a loft
- 1,464 heated square feet, 1,512 unheated square feet
- An optional finished basement adds 1 or 2 bedrooms, bath, family room, and 896 heated square feet
- Covered porch & open deck
- 6x12 D Logs on main level with a Limited Lifetime Warranty
- Log siding, cedar shake siding or board and batten on second level
- Premium high performance, Low-E windows and doors
- Conventional framed or pre-engineered I-joist roof framing system
- 30-year architectural shingles or 25 year ribbed metal roofing
- Premium door and window hardware

©2015 Walker Top Log Homes

updated 5/6/15



In Partnership With ...



675 S Old Piedmont Highway
Greenville, SC 29611

office 864-220-2884 • fax 864-220-2818
email Info@WalkerTop.com • www.WalkerTop.com

BEN'S KNOB

Square Foot Totals

1st Floor = 896 ft²

2nd Floor = 568 ft²

Optional Basement = 896 ft²

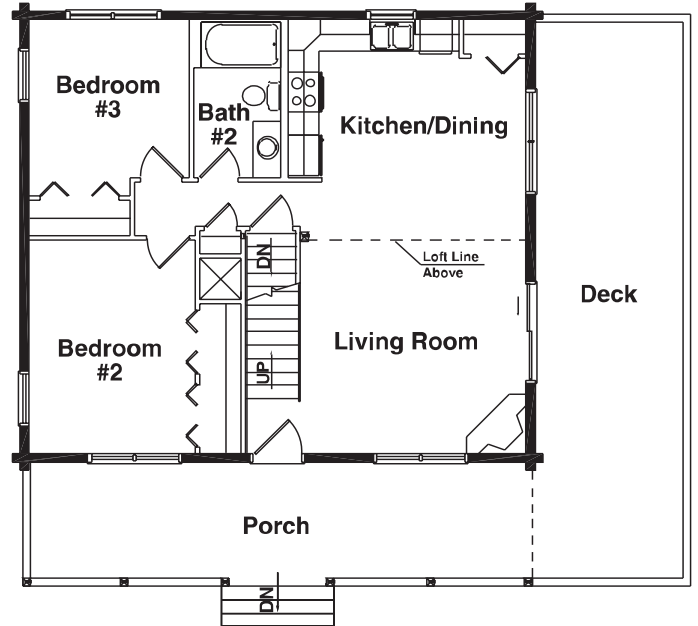
Total Heated ft² = 2,360 ft²

Deck = 360 ft²

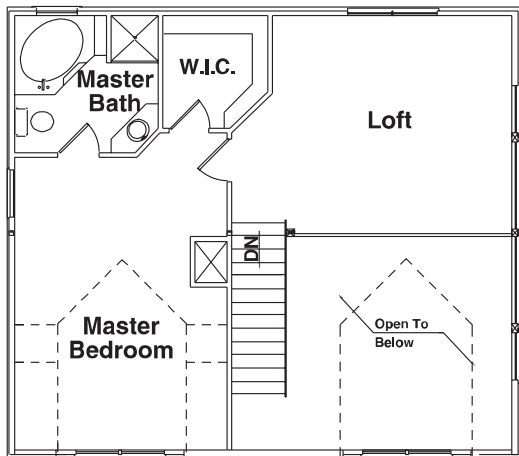
Porch = 256 ft²

Total Unheated ft² = 616 ft²

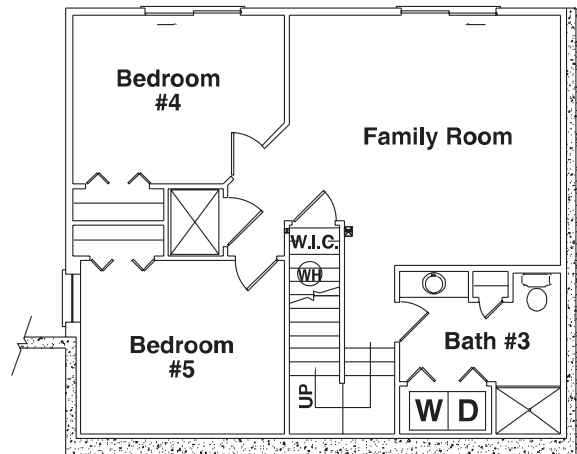
1st Floor Plan



2nd Floor Plan



Optional Basement Floor Plan



©2015 Walker Top Log Homes

Artistic rendering of model house and floor plans, subject to change without notice or obligation.

updated 5/6/15



In Partnership With ...



675 S Old Piedmont Highway
Greenville, SC 29611

office 864-220-2884 • fax 864-220-2818
email Info@WalkerTop.com • www.WalkerTop.com